

Impact Dot Matrix Printer

76MM Impact Dot Matrix Printer User Manual

Please keep user manual for reference

Attention

- Put the printer on stable surface. Choose firm, level surface where avoid vibration.
- Don't use and store the printer in high temperature, high humid and serious polluted place.
- Connect power adapter properly to grounded receptacle. Avoid using the same socket with large power consumption devices that can lead to the power fluctuation.
- Avoid water or other objects go into printer. Once happened, turn off printer immediately.
- Print without paper roll will damage the printing head seriously.
- Unplug printer from power receptacle if do not use it for a long time.
- Only use approved accessories, never try to disassemble, repair or remodel it yourself.
- Use standard power adapter.
- Use high quality paper, this ensures the printing quality and life of printer.
- Please turn off power before plug/ unplug cable.
- This printer is used only under 5000 meters.

Applications

- ★ POS system
- ★ EFT POS system
- ★ Gym, post, civil aviation system
- ★ Inquiry, service system
- ★ Instrument test
- ★ Tax, Tab

Features

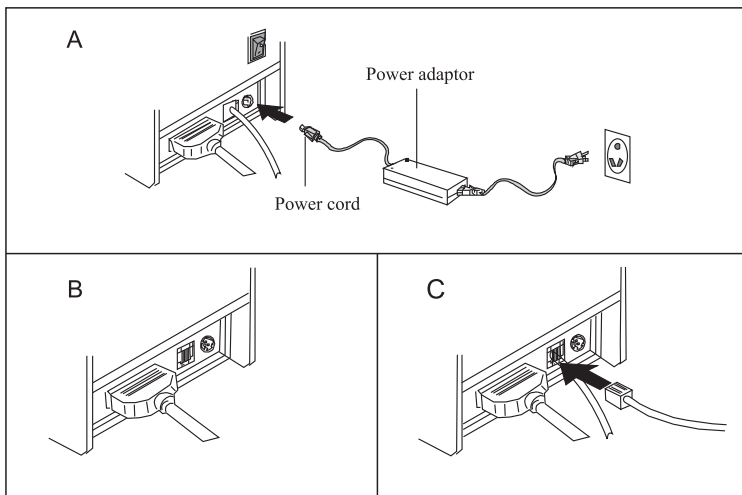
- High quality printing
- Low- noise and high speed printing
- Support cash drawer driver
- Support black mark orientation
- Parallel, Serial, USB, LAN interface optional
- Built-in data buffer(Able to receive new data while printing)
- Characters can be enlarged, adjusted line spacing, left and right spacing, as well as bold and under line
Equipped with paper source sensor, Loading paper and detection automatically
- Support different density NV bitmap download and printing
- Support server printing
- ESC/POS compatible, setting DIP switch to choose characters and fonts
- Through software binding to set printer identification
- Support international languages

Specifications

Printing method	9-Pin impact dot-matrix printing
Printing speed	4.5 line/sec
Roll paper	Paper width:75.5 ± 0.5mm
Column capacity	400 dots/line
Character size	ANK, Font A: 9×9 dots, Font B: 7×9dots simplified/traditional Chinese: 16×16dots
Command	Compatible with ESC/POS
Interface	Serial/Parallel/USB/LAN
Auto cutter	Full or Partial(optional)
Duplicating ability	Printing head life:10 Million Lines
Paper	2-part/3-part color paper
Ribbon	ERC-39
Paper thickness	0.05~0.08mm (Total thickness≤0.2mm)
Adaptor input voltage	AC 110V/220V, 50~60Hz
Power supply	DC 24V ± 2.5A
Printer input voltage	DC 24V ± 2.5A
Cash drawer control	DC 24V ± 1A
Working environment	Temperature (0~45℃), humidity(10~80%)
Storage environment	Temperature (-10~60℃), humidity(10~90%)
Drivers	Win 9X/Win 2000/Win 2003/Win XP/Win 7/Win 8/Win 8.1/Linux

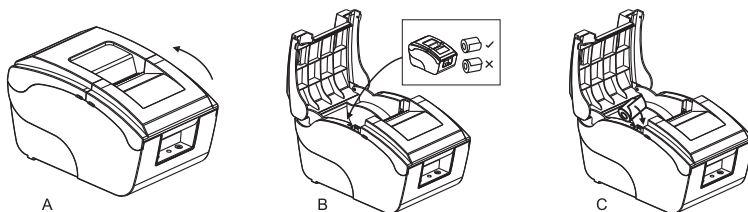
Connection

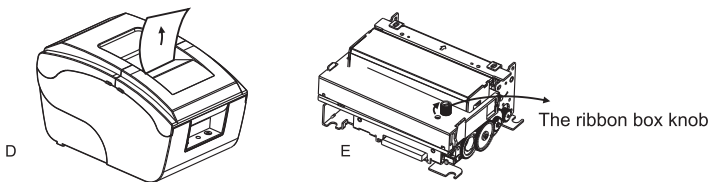
- A. Connect AC power cord to power, DC power cord to printer.
- B. Connect printer and computer/ tablet.
- C. Connect cash drawer.



Paper roll & ribbon loading

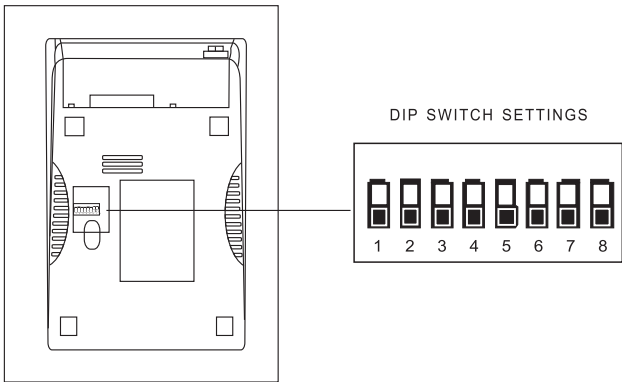
- A. Turn on printer, open top cover.
- B. Load the paper roll as shown in the image.
- C. Hold both sides of roll paper, and put it into paper-in entrance. The printer will finish feeding automatically.
- D. Tear off extra paper and close the cover.
- E. Open front cover, turning ribbon box knob for 5-6 laps as per arrow direction, insert ribbon as per below image. Push the ribbon box until clamping.





Setting printing Mode(DIP Switches)

DIP switches can be changed settings, such as: mark sensor, cutter, languages, beeper, print density baud rate etc.



DIP switch functions

DIP Function				
NO.	Function	OFF		ON
SW-1	Black mark mode	NO		YES
SW-2	Select cutter	NO		YES
SW-3	Cutter mode	Partial		Full
SW-4	Unidirection	NO		YES
SW-5	Two-byte code	YES		NO
SW-6	Baud rate	9600		19200
SW-7	Paper width 58mm	NO		YES
SW-8	Char per line (in the following figure)			
SW-7	OFF	OFF	ON	ON
SW-8	OFF	ON	OFF	ON
Char per line(CPL)	40/33CPL	42/35CPL	30/25CPL	33/27CPL

Indicator light instruction

Printer has two lights, Individually for 【 POWER 】 with blue light and 【 STATUS 】 with red light. Here below is the meaning:

(Status) indicator light:

1. Long time red light shown: printer is ready.
2. Fast twinkis red light sound alarm: paper run out.

(Power) indicator light:

Blue light is for power indicator light

Self Test

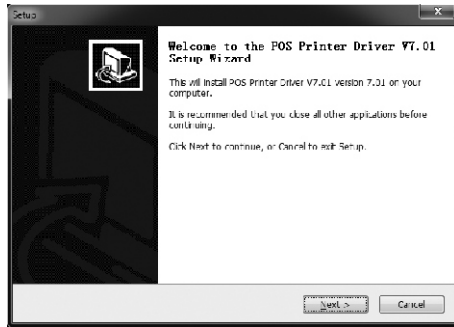
Method: When printer is connected power, keep in off mode, press “FEED” button and turn on at the same time, 2 seconds later release “FEED” button, a completed self test will be printed out to show printer settings.

Driver installation

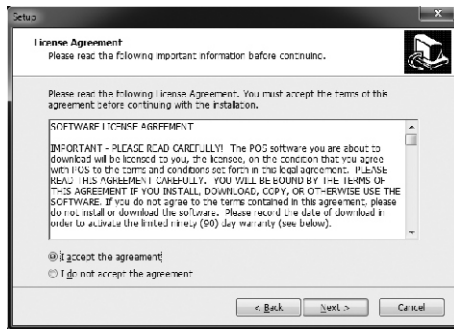
Two method: 1) Install driver directly.
2) Printing via port directly.

1) Install driver under WINDOWS OS (Steps as below):

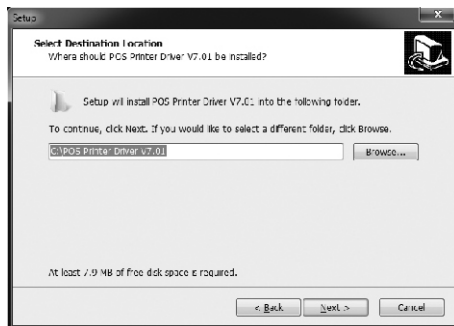
1.Double click  driver.



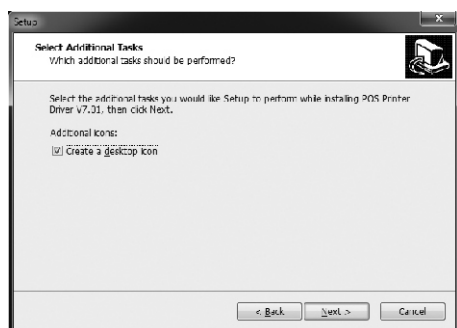
2.Select: I accept the agreement.



3.Default installation folder.



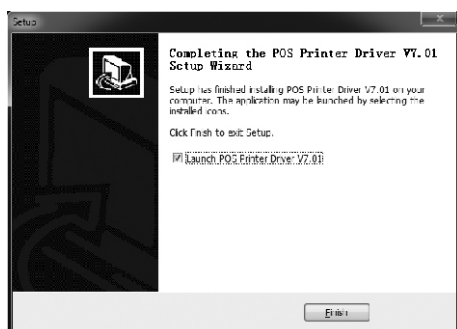
4. Create a shortcut on the desktop.



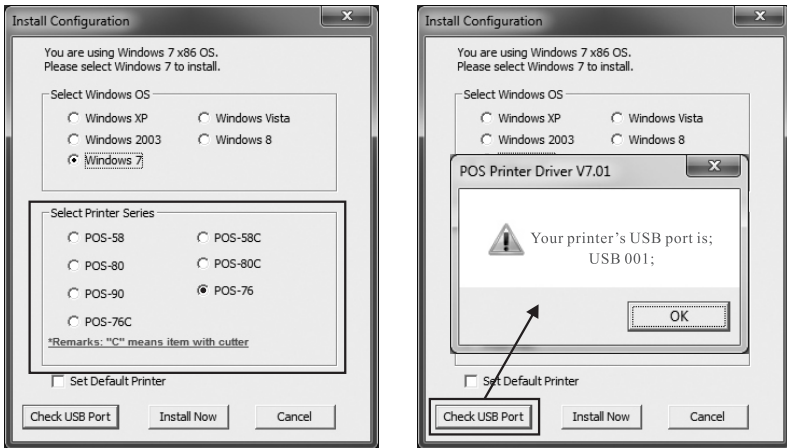
5. Install by below instruction:



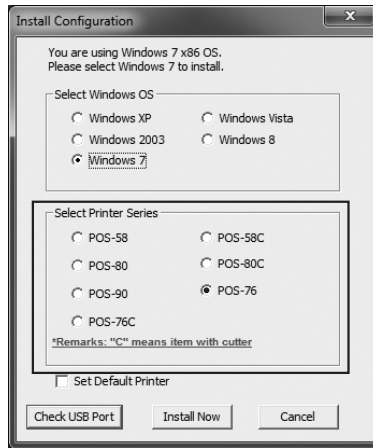
6. Finished.



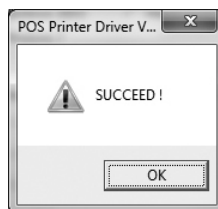
7. Choose the right port, shown as below:



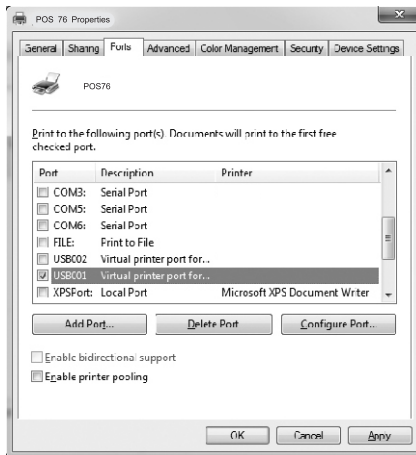
8. Choose the right series, shown as below:



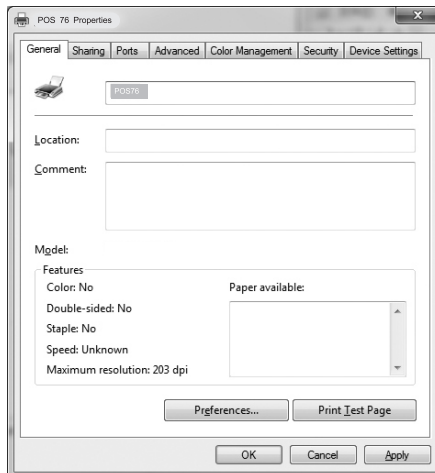
9. Click “OK” to configure the port.



10. Choose the detected USB001, click apply, shown as below :



11. Select general and print test page.



2) Printing via port directly

- No need to install printer driver. Directly choose a right port (i.e., USB, LAN, Serial, Parallel) in software.
- Printing via port needs commands to control printer, ESC/ POS commands are integrated directly itself.

Troubleshooting

If any troubleshooting is appeared, please refer to this chapter for correspondence settlement. In case the problem can't be solved, please contact dealer or manufacturer to deal with it.

1. The indicator light of control panel does not work

Please check if the power cord is well connected. Check if the power is on.

2. The STATUS indicator light twinkles, printer does not work.

- (1) Turn off the printer and check if is paper jammed. If yes, Please clean jam problem.
- (2) Printing head might be overheat afer printer works for a very long time. It will continue to work after cool.
- (3) If the printer is neither jammed nor overheated, please turn off the printer, and re-start it 10 minutes later. If still does not work, unplug the printer immediately and contact with service technician.

3. The STATUS indicator light continuous bright, but printer does not work.

Print selftest page to check if the printer is working properly. If can not print, please contact with dealer or service technician. If it can be running normally, Checking the following contents:

- (1) Check if the printer and computer connect correctly, make sure whether the connecting can meet the requirements of printer and computer at the same time.
- (2) Make sure the parameter of printer matches with computer. You may refer to interface settings of selftest page. If the printer does not work, please contact with dealer or service technician.



Warning: No part of this manual can be changed without agreement. The company reverses the rights to modify the technology, components, software and hardware. You may ask the distributors for more product information. No part of chapter in this manual can be copied or transmitted in any formats without permission.